



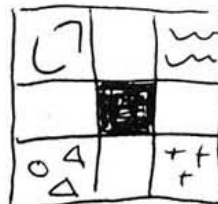
GREENBAUM'S  
**Quilted Forest**  
 240 Commercial Street NE • Salem, Oregon 97301 • 503-363-7973

This 7 month quilt is meant to be scrappy, but looks best if you choose a theme, such as 30s, Americana, batiks, or one designer's collection. It takes a total of 5-6 yards for a lap quilt and 8-9 yards for the twin. (Generous estimate)

MYSTERY SCRAPPY SATURDAY SAMPLER BLOCK 1

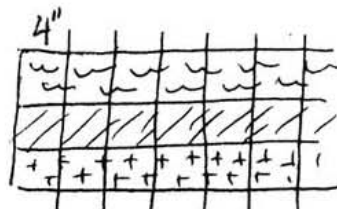
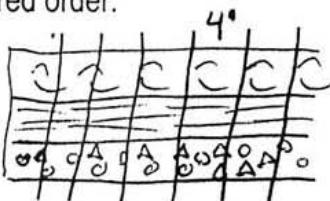
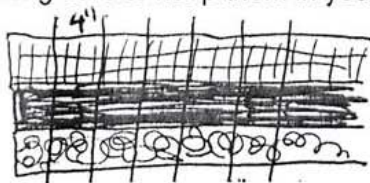
First Clue!! Finished Size-- Lap "65x71" or Twin—"68"x91"

This is one of my favorite blocks as it looks complicated, but is really easy. First we are going to make a nine-patch. Then we'll cut it up to create the final block. You will need to make 6 nine-patch blocks. The center block needs to be very light/ dark or otherwise noticeable. Your nine-patch can be 9 different prints but keep in mind only the outside four corners will not be cut in half...so put your medium to larger prints there and smaller prints in the other 5 blocks.

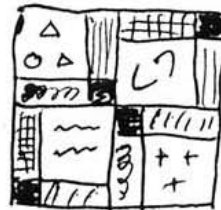
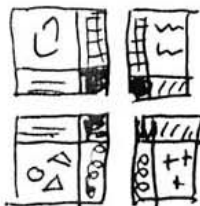
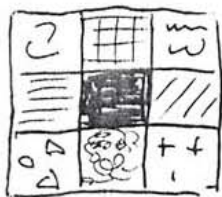


You can sew your nine-patches one square at a time or use strip methods, but for consistency, I recommend keeping the center square the same.

Cut your squares or strips 4" wide. If cutting strips, sew them together in sets of three as pictured, cross cut at 4" intervals to get 6 strip sets. Sew one strip from each set into (6) nine-patch blocks taking care to keep them in your desired order.



Quarter or crosscut your 9-patch blocks to give you four units each.



Sew four units back together, but flip two diagonal units so that two center square portions remain pointing to the center and two opposite ones point outward. If you made different nine-patches you don't have to join units cut from the same nine-patch back together. You can mix it up for an even scrappier look.

Each block should measure 10 1/2" unfinished, or 10" finished Pattern source Unknown  
 Sylvia Dorney for Greenbaum's Quilted Forest