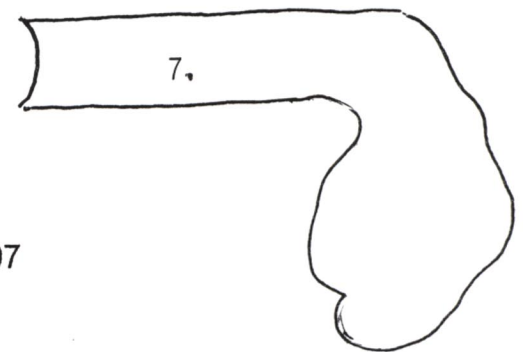
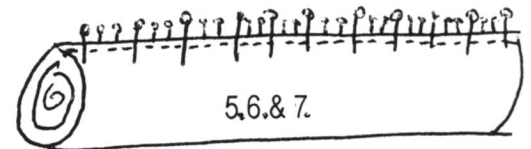
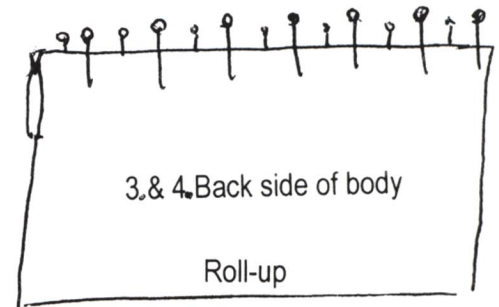
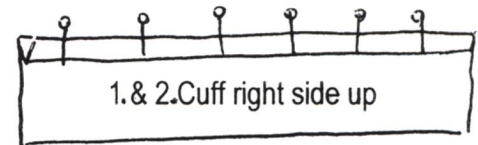


We Inspire Creativity

PILLOW CASE PATTERN—The Burrito Method

1/3 yard cuff
2 inches trim
3/4 yard body

1. This method eliminates all raw edges. Cut selvage edges off all pieces. Lay out cuff right side up.
2. Fold and press trim piece in half to one inch by width of fabric. Place together on the top long edge of the cuff fabric.
3. Press crease flat on body and place right side down on top of trim and cuff – raw edges even. (four layers)
4. Pin every 3 inches.
5. Roll body tightly toward pins
6. Bring lower edge of cuff up even with pinned edge, to enclose the rolled body, add more pins between those already placed. (five layers)
7. Sew all layers along the pinned edge, using a 1/4" seam allowance. Remove all pins and turn right side out, through the open ends. Press trim towards the cuff.
8. French seam the side seams using a 1/4" seam allowance with the pillowcase right side out and a 3/8" allowance with it right sides together.
9. Repeat the French seam on the end.



Sylvia Dorney for Greenbaum's Quilted Forest Copyright 2007

